

PTTEP at a Glance

Company Profile

Founded on 20 June 1985 as the upstream arm of the Petroleum Authority of Thailand, PTT Exploration and Production Public Company Limited (PTTEP) main business is to explore and produce petroleum mainly natural gas, crude oil and condensate with focus areas in Thailand, Southeast Asia and the Middle East countries.

Having been listed on the Stock Exchange of Thailand since 1993, PTTEP is currently the only listed exploration and production and one of the largest companies on the country's stock exchange.

Stock Summary

Shares outstanding*

3,970 million shares

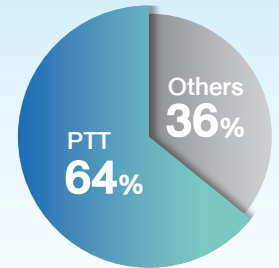
Number of shareholders*

55,475 persons

Market capitalization**

500.22 billion Baht

Shareholding Structure*



* As of 26 February 2025
** As of 31 July 2025

Key Highlights

- ✓ The only listed E&P company in Thailand and the largest publicly listed E&P company in Southeast Asia
- ✓ Strong producing asset base with extensive operating experience in the region
- ✓ Strong credit rating same at parent and country's level
- ✓ ~70-75% EBITDA margin from high quality assets

Latest Significant Developments

G1/61 (Erawan)

The project has increased its daily gas production to 800 MMSCFD since 20 March 2024

G2/61 (Bongkot)

Maintain daily gas production with ongoing production platforms installation, and production well drilling

Arthit

GSA amendment, increase Daily Contracted Quantity from 280 MMSCFD to 330 MMSCFD (effective June 2025 onwards)

Sinphuhorm

Acquired additional stake and increased its participating interest from 80.487% to 90% with the completion effective from 16 April 2025.

MTJDA

Acquired 50% interest in Block A-18 effective from 25 July 2025, in addition to existing investment of 50% interest in Block B-17-01

Arthit CCS (Thailand's Pilot CCS)

The Front-End Engineering Design (FEED) was completed, and the project is approaching FID with storage capacity at 0.7-1 MTPA.

Algeria HBR

Preparation for 2nd phase development, aiming to ramp up production to 30KBPD and 60KBPD in 2029 and 2030 respectively.

Algeria Reggane II

PTTEP was awarded the block with 34% interest, to be effective upon the official announcement by the Algerian government.

Mozambique LNG

Decision to remobilization and construction resumption is underway.

SK410B Lang Lebah

Currently under finalizing re-engineering design within 2025 for cost reduction and optimal balance between production capacity and investment

Ghasha Concession

Dalma Gas construction readiness including gas processing facility, wellhead platforms and subsea gas pipeline installation, with the first production expected in early 2026.

Abu Dhabi Offshore 2 (Waset)

Production Concession Agreement (PCA) for Waset area was approved with PTTEP's interests at 12% and the first production expected in 2027.

Find out more from the corporate website: [About PTTEP](#)

Credit Rating

TRIS RATING

AAA
Stable

MOODY'S

Baa2 stand-alone rating

Baa1
negative

STANDARD & POOR'S RATINGS SERVICES
MCGRAW HILL FINANCIAL

BBB stand-alone rating

BBB+
Stable

Fitch Ratings

bbb stand-alone rating

BBB+
Stable

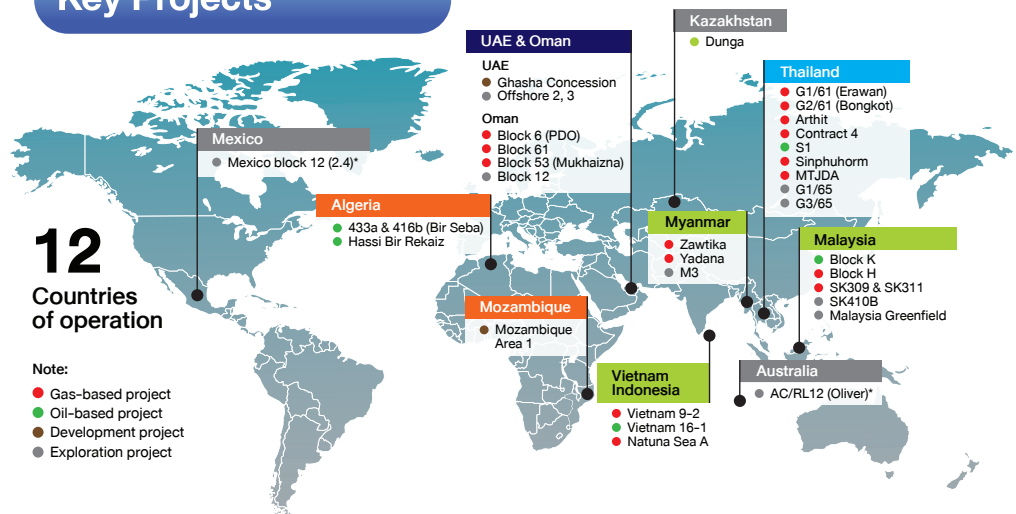
Products and Pricing

Natural gas is sold under long-term gas sales agreements, each of which typically ranges from 15 to 30 years. Sales price is governed by the pricing formula, linked to market oil price and economic indices, as stipulated in the agreement.

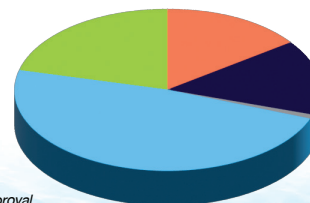
Liquid products mainly comprise of crude oil and condensate, which are sold in spot markets as well as under short-term and long-term contracts. Sales price is benchmarked with regional market crude oil prices per industry's common practice.

Find out more from the corporate website: [Our Business](#)

Key Projects



Asset value of **28.6** billion USD as of June 2025



* Australia and Mexico : Under relinquishment approval

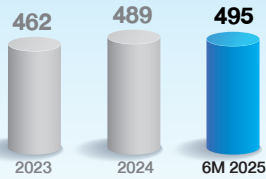
PTTEP at a Glance

Performance

'000 barrels of oil equivalent per day

Sales volume

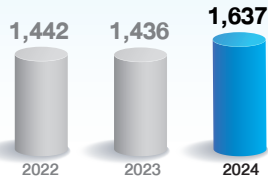
Gas-focused portfolio 72% Gas mix



Million barrels of oil equivalent

Proved reserves

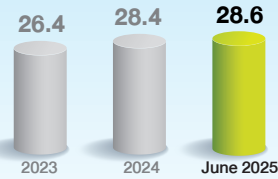
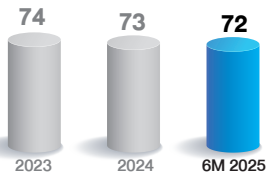
Maintain reserves life



% of sales revenue

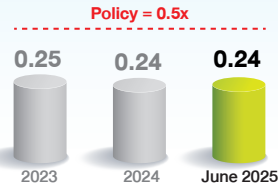
EBITDA margin

Strong profitability at the range 70-75%



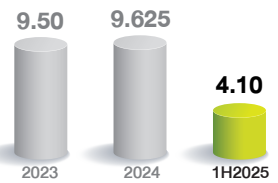
Total assets

With the key operating assets in Southeast Asia



Debt/Equity ratio

Robust capital structure



Dividend per share

Consistent Dividend yield

Find out more from the corporate website: [Financial Performance](#)

Sustainable Development



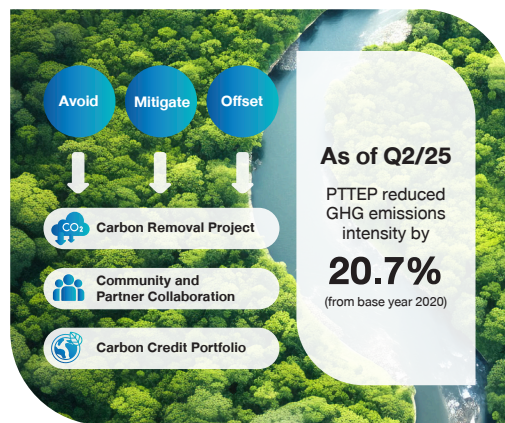
Sustainability Yearbook Member S&P Global
Corporate Sustainability Assessment (CSA) 2024

SET AA
ESG Ratings 2024

FTSE4Good
2016-2024

MSCI
Level "BB"

CDP
Level "B"



2020
Base Year

2030
30%
GHG Intensity* Reduction

2040
50%
GHG Intensity* Reduction

2050
NET ZERO
Greenhouse Gas Emissions E&P, Scope 1&2 with operational control

Carbon Capture and Storage (CCS) at Arthit Project
The project is approaching its Final Investment Decision (FID) and is under the development preparation. It is expected to take approximately three years before commencing carbon injection operations. The expected full storage capacity ranges from 0.7 and 1 million tonnes of CO2 equivalent per year.

MoU with Oil & Gas Methane Partnership (OGMP) 2.0
On 4 October, PTTEP signed MoU with UNEP for Oil & Gas Methane Partnership (OGMP), which is the voluntary initiative to help companies reduce methane emissions in the oil and gas sector.

COP 28
PTTEP has pledged the Oil & Gas Decarbonization Charter with three key objectives to support climate change mitigation;
1) achieving net zero operations by or before 2050,
2) aiming for near-zero upstream methane emissions by 2030 and
3) zero routine flaring by 2030.

Find out more from the corporate website: [Sustainable Development](#)

Ratio Formula

Debt/Equity ratio	Total interest bearing debt / shareholders' equity
Dividend per share	Dividend payment / shares outstanding
EBITDA margin	(Sales revenue – non-cash expenses) / sales revenue
Market capitalization	Shares outstanding x share price

Disclaimer

The information contained on this document is historical information that presents PTTEP's financial position as of their particular date. PTTEP assumes no obligation for updating this information. All information contained in this document is believed to be accurate and reliable. Official financial information is as disclosed in the financial statements as announced on the Stock Exchange of Thailand website.

Contact Us

Investor Relations Department
PTT Exploration and Production PCL
Energy Complex Building A, Floor 21
555/1 Vibhavadi Rangsit Road, Chatuchak
Bangkok 10900, THAILAND

Tel: +66 2 537 4000
Fax: +66 2 537 4444

Email: ir@pttep.com
Corporate website: <http://www.pttep.com>