

Your Family Your Hospital



Stock Information

As of 31 March 2026

SET : BCH

Price:
9.70 Baht

52 Week High / Low:
15.90-9.25

Market Cap:
24,189.00 M.baht

Sector:
Health Care Services



10 Hospitals



3 Hospitals



1 Hospital

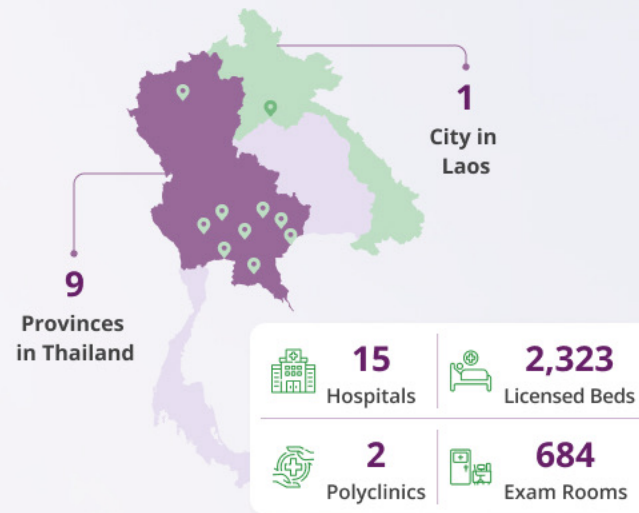


1 Hospital



1 Center

BCH's Healthcare Facilities in Thailand and Laos



Major Shareholders

As of 30 April 2026

- 50.07% Harnphanich Family
- 1.94% Vibhavadi Medical Center Public Company Limited
- 6.14% Thai NVDR Company Limited
- 1.81% Vayupak Fund 1
- 3.57% Social Security Office
- 36.47% Others

"Our four hospital brands and excellence clinics provide comprehensive care for all patient segments"

Highlights of Our Centers of Excellence



Heart Center



Kidney Center



Advanced Ophthalmology Center



Kasemrad Ari Radiation Oncology Clinic



World Diabetic Foot Center

Our Medical Standard and Certifications



3M/2026 Financial Highlights



Total Revenue
2,928.8 MB
Flat YoY



EBITDA
646.2 MB
-10.7% yoy
EBITDA Margin
22.1%

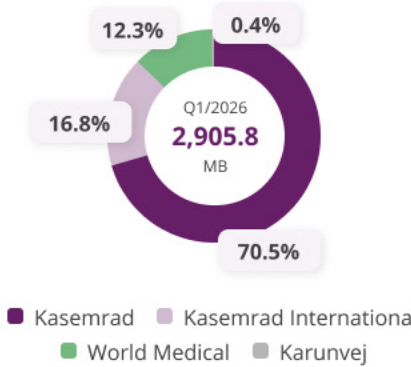


Net Profit
267.6 MB
-16.7% YoY
Net Profit Margin
9.1%

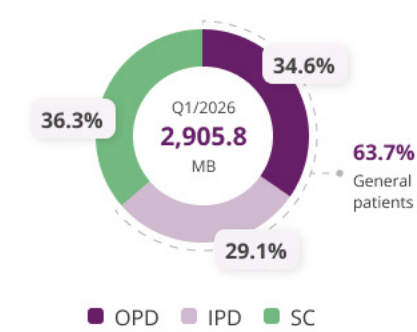
Operating revenue

Revenue mixed

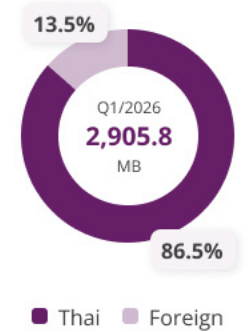
By hospital group



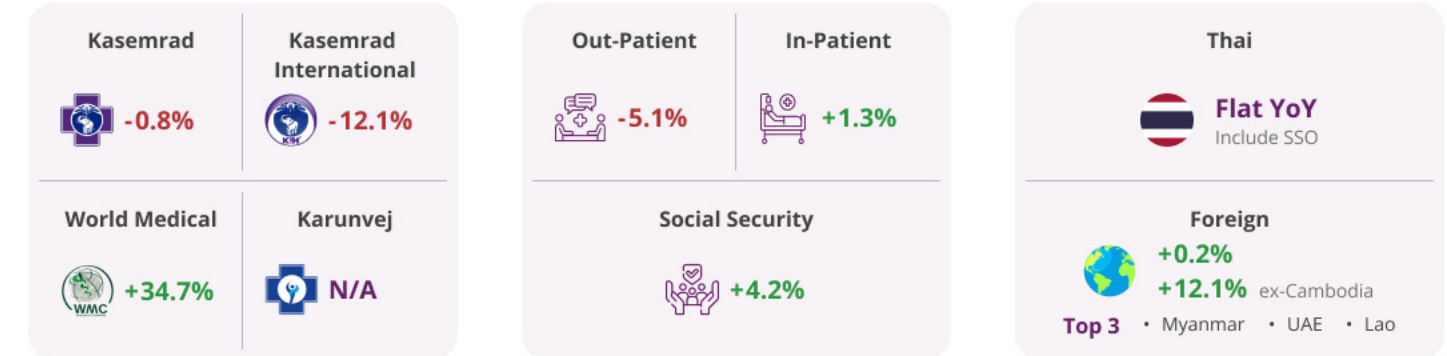
By patient type



By nationality



Growth Perspective (YoY)

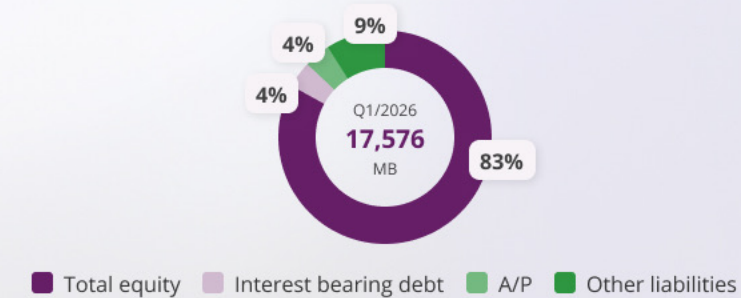


Note: Include revenue from Kasemrad Ari Radiation Oncology

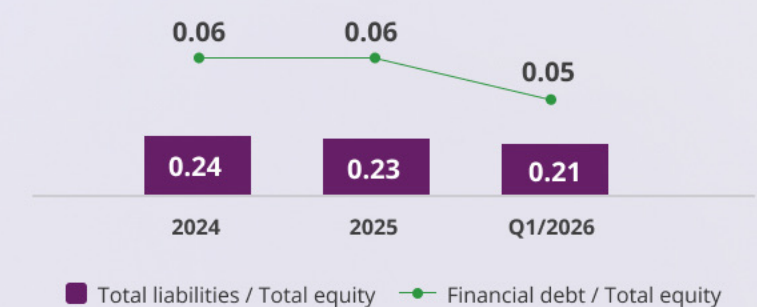
Capital Structure

As of 31 March 2026

Financial Position



Gearing ratios



Business Focus & Growth Strategy



Performance and outlook of the new and rebranded hospitals



Long-term cost optimization and general patient attraction strategy



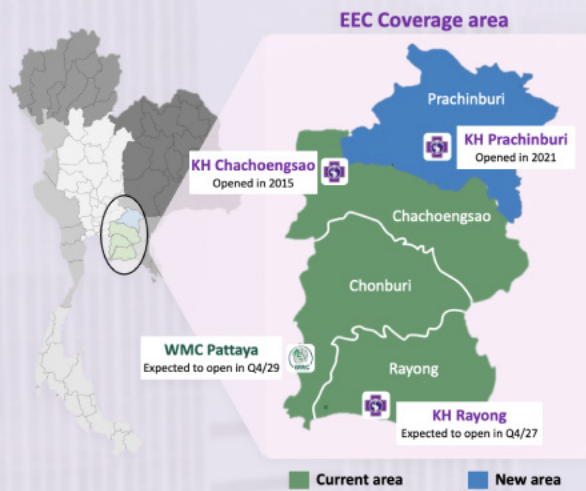
Renovation projects and new greenfield hospitals pipeline

Expansion opportunities for Kasemrad Hospital Prachinburi

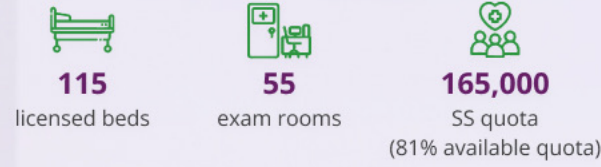


Eastern Economic Corridor (EEC)

EEC is Thailand's key economic development zone currently covering Chonburi, Rayong and Chachoengsao provinces aimed at attracting foreign investment, industrial expansion and infrastructure development. For BCH, the Company is currently applying for EEC investment benefits for hospitals located in the EEC area including Kasemrad Hospital Chachoengsao, Kasemrad Hospital Rayong and World Medical Hospital Pattaya.



Existing capability of Kasemrad Prachinburi



Key benefit under EEC

- ✓ Tax benefit for new specialized centers
- ✓ Ability for foreign doctors to practice

Expansion Opportunity in Prachinburi Province

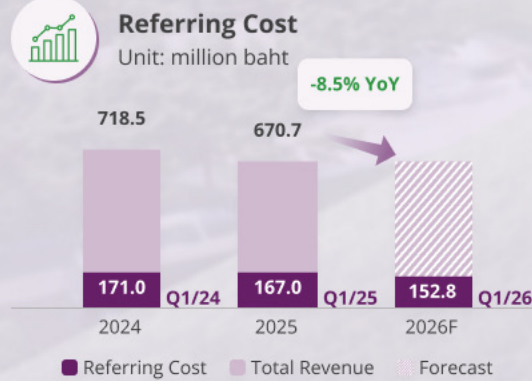


Source: Department of Industrial Works, Prachinburi Provincial Labor Office, Ministry of Public Health, and Bureau of Registration Administration and Department of Provincial Administration.

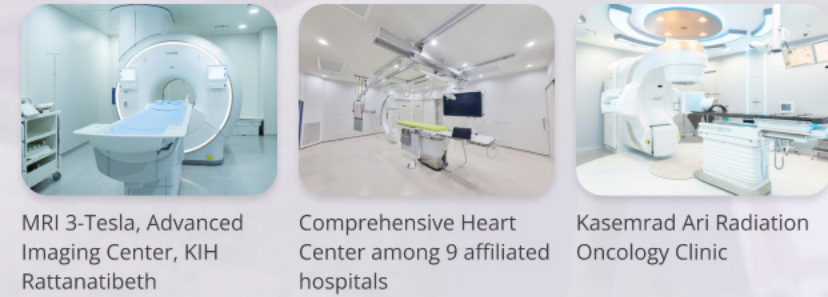


Enhancing internal referral capabilities to reduce long-term referral cost

BCH has enhanced patient referral system among affiliated hospitals to reduce referral costs to external hospitals.



Key specialized centers

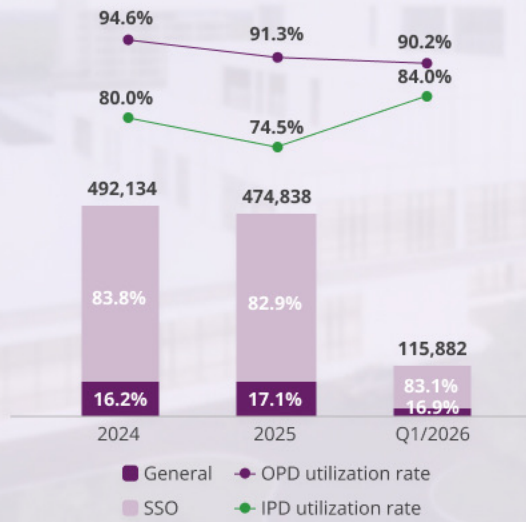


- Integrated Heart Centers Across 9 Hospitals Strengthen Referral Network
- Kasemrad Ari Boosts Cancer Care, Saving THB 60-70 Million Annually

Enhancing the capacity of Kasemrad Hospital Rattanatibeth for long-term growth



Total number of patient
Unit: people



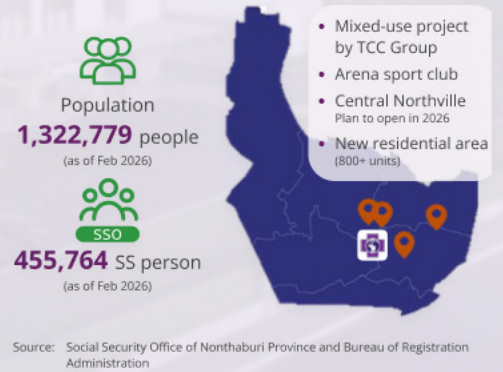
Expansion of new building and specialized centers
+ 250 beds

Why we expand?

- Service Excellence**
Upgrading facilities and expanding capacity to meet rising demand
- Profitability Drive**
Attracting new general patient bases and Leveraging Social Security network
- Enhancing Market Competitiveness**
Preparing for long-term market growth



Growth opportunity in Nonthaburi province



BCH's activities highlights



Kasemrad Hospital International Vientiane has continued to enhance its medical services with the official launch of the "Breast Cancer Center," providing comprehensive care ranging from screening and diagnosis to personalized treatment.



Kasemrad Hospital Bangkai officially launched the newly renovated "Building C - Social Security Outpatient Department" under the theme "A New Era Social Security Care," aiming to enhance service standards for insured patients with improved efficiency and modern facilities.

ESG: Sustainability highlights in 2025

Environmental

Give Life to Blister Packs Project collects used blister packs and medicine sachets for recycling to reduce waste and promote the circular economy.



Social

BCH in collaboration with Bangkok Chain Dental Co., Ltd. (BCD), implemented the "Oral Health Promotion Program for Monks," providing dental services through mobile dental units along with education on proper oral healthcare practices.



Governance

Kasemrad Hospital International Aranyaprathet received HA3 accreditation, reflecting quality and patient safety standards in healthcare services.



IR Calendar



IR Contact

- Telephone:** +66(0)2 836 9904, 9913, 9940
- Email:** ir@bangkokchainhospital.com
- Website:** www.bangkokchainhospital.com
- Address:** 44 Moo 4, Chaengwattana Road, Pakkred, Nonthaburi 11120, Thailand